

## 80 CHARLOTTE STREET.

FITZROVIA W1

Multiplex welcomes you to the July issue of 80 Charlotte Street's construction phase bulletin newsletter.

### PROJECT OVERVIEW

At 80 Charlotte Street, Derwent London is creating a new and vibrant urban scheme, which comprises offices, retail and residential units. Completion is expected at the end of 2019.

### CONSTRUCTION WORKS JUNE - JULY

#### 65 Whitfield St

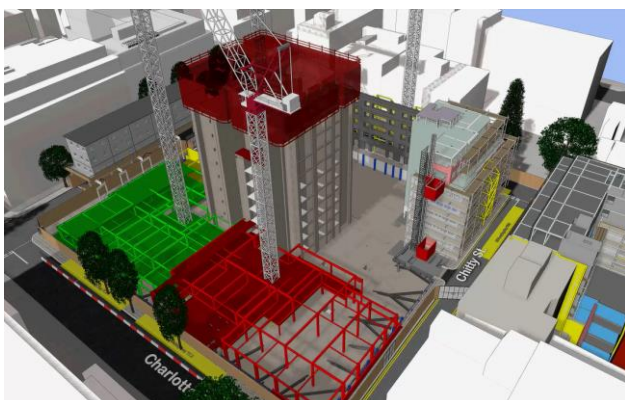
- External brickwork and window installations
- Internal works to Benchmark Apartment
- Lift Installation

#### 67-69 Whitfield St

- External Scaffold and Brickwork
- Window Installations
- Internal works to Benchmark Apartments

#### 80 Charlotte St

- Central Core walls progressing to Level 05
- Building foundations and drainage progressing
- Basement slab construction
- Steel and concrete floor plank installations
- Temporary works steelwork removal
- Temporary closure to Chitty Street during working hours only



4D Modelling Showing the 80 Charlotte Street Project  
July 2018

### LOCAL RECRUITMENT

The site promotes the hiring of candidates from Camden and Islington. We are always recruiting construction apprentices and operatives through King's Cross Construction Skills Centre. For information, please contact Claire Scrimgeour.

### ENVIRONMENT AND SUSTAINABILITY

Minimising our impact is essential to us. We track our waste, energy, CO<sub>2</sub>, water usage and constantly explore ways to reduce it. Some key statistics to date:

- 98.64% waste diversion from landfill
- 867 tonnes carbon
- 5991 m<sup>3</sup> water
- 358 m<sup>3</sup>, 100% certified timber

### CONSIDERATE CONSTRUCTORS

We are registered with the nationwide Considerate Constructors Scheme (ID no. 98128).

Tel: 0800 783 1423.

Visit [www.ccscheme.org.uk](http://www.ccscheme.org.uk) for more information.



### NEIGHBOURHOOD LIAISON MEETING

The next local Residents and Businesses meeting will be held at 18.00 on Thursday 6th September on site.

### CONTACT US

80 Charlotte Street Project Office, Site Cabins,  
23 Howland Street, London, W1T 4AY

**24/7 site security:** 0746 449 9004

### Site Hours

08.00 – 18.00 Monday to Friday

08.00 – 13.00 Saturday

We may need to complete some out of hours, non-noisy works and will provide early notice if this is necessary.

### Project Director:

Nigel Bunce

[Nigel.Bunce@multiplex.global](mailto:Nigel.Bunce@multiplex.global)

### Community Liaison Manager:

Claire Scrimgeour

[80CharlotteStreet-Neighbours@multiplex.global](mailto:80CharlotteStreet-Neighbours@multiplex.global)

Or scan the QR code:

