



Look both ways when crossing the road

Use the pedestrian crossings

Tottenham Court Road, High Holborn, Gower Street and Bloomsbury Street now all have two way traffic

Key summary / information

- West End project started Monday 5th March 2018
- Sign up to our [monthly newsletter](#)
- [Latest work updated](#) weekly online
- [Scheme maps](#) available on our website
- Deliveries Guide [available online](#)

New for this month

- Traffic maps updated and [available online](#)
- Whitfield Gardens, Alfred Place and Princes Circus green spaces updates
- Howland Street cycle lane now open
- Safe and Healthy Streets - [Streets Consultations](#) within the WEP area

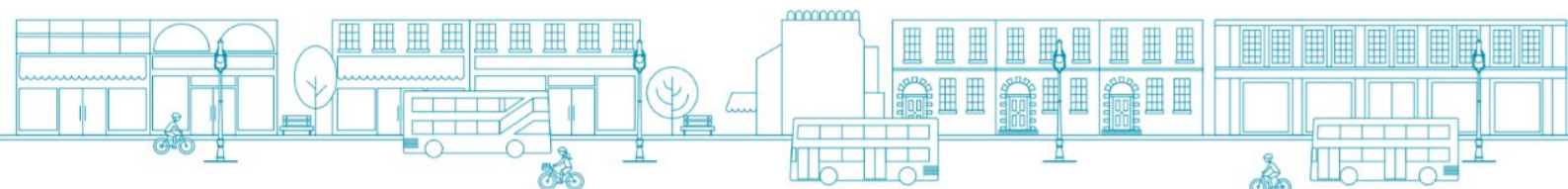
Project Update – 22nd March 2021

Gower Street and Bloomsbury Street two way to traffic

As a reminder Gower Street and Bloomsbury Street is now two way to traffic between Grafton Way and High Holborn. This means changes for pedestrians, drivers and cyclists. The northern end of Gower Street remains one way to facilitate HS2 works and we will be in contact again once we are able to make the final full change to two way traffic.

The full traffic restrictions on Tottenham Court Road are now permanent. Areas of Tottenham Court Road are now restricted to buses and cyclists only on Mondays - Saturdays 8am-7pm. For more information on any of these changes [visit our website](#).

Our website [includes maps](#) on how you can drive around the area inside and outside of the restricted hours. These maps have now been updated as of the 29th March.



Tottenham Court Road

Howland Street cycle lane update

The cycle lane on Tottenham Court Road into Howland Street is now open.

We thank all cyclists for their patience while the lane was reconfigured.



Whitfield Garden update



We have now installed a new “green fence” underneath the Fitzrovia Mural. This is to prevent graffiti on the mural – which is specially treated with an anti-graffiti coating making it easy to remove.

We have also recently sent a letter to residents asking for their help in caring for this beautiful new space in particular to tackle to reoccurring issues:

1. Someone has been regularly painting over graffiti in Whitfield Garden with black paint. While well intentioned we kindly ask that person to stop. Covering the graffiti with paint actually makes it harder to remove and could damage the mural.
2. Someone has tried to clean the furniture using an oil, Again while well intentioned we are asking that person to refrain from doing so again. We have teams who can clean using the proper materials that will not stain or damage the beautiful new furniture.
3. Some people have been walking dogs within the planting beds which has led to some of the plants being trampled, damaged and destroyed. The bulbs and plants cannot grow and flourish while being walked on, especially as they are still young and getting established. We kindly ask anyone who has been walking or allowing dogs on the planters to stop.

These issues are very much being caused by the minority so we would like to thank all the other local residents who have been enjoying the park responsibly and we hope they are enjoying the space even more as the plants flourish through spring and summer.

Alfred Place update

Work is underway on Alfred Place to transform the area into a park. The road surface has been broken up, trial holes are underway to investigate the location of services and the hoarding is now up surrounding the first two working areas.

A programme of works will be shared online during April and sent to all local residents and stakeholders. We are planning for the park to be open this summer. Updates on progress will continue to be shared [on our website](#).



Princes Circus update

We are now in the process of tendering for the work to transform the public space at Princes Circus.

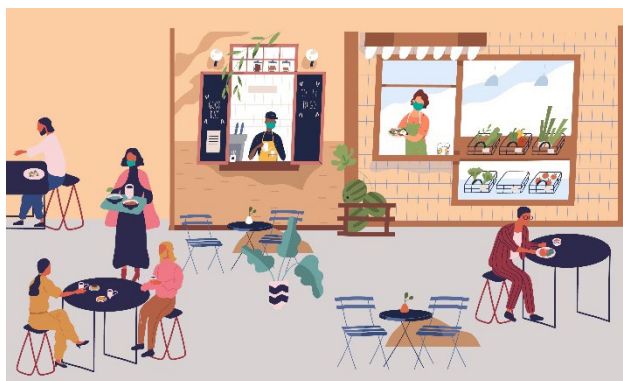
We expect to be able to appoint a contractor in May and share a predicted programme with all local residents and stakeholders after that.



Safe and Healthy Streets – Streatery Consultation

Social distancing rules mean that restaurants, cafes, pubs and bars can only offer limited indoor seating and, in many locations, pavement space is too narrow for tables and chairs.

To support our hospitality businesses to continue trading when lockdown eases from 12 April, Camden Council has set up a Streateries Programme: temporary barriers are placed around new spaces in the road so that businesses can offer outdoor dining, and pedestrians can pass safely. It is vital that we consult now to help the hospitality sector reopen safely in



line with the government's roadmap out of lockdown. We are now consulting on 6 proposed Streeteries which include on South Crescent and Great Queen Street both within the West End Project area. To find out more on these consultations [visit our website](#). consultations close on Monday 12th April.

Contact details

Website	camden.gov.uk/westendproject
Electronic Newsletter	Sign up via our website
Phone	Alfred Place enquiries: 0800 917 6263 Other project enquiries: 0207 974 4444
Email	westendproject@camden.gov.uk

