

Look both ways when crossing the road

Use the pedestrian crossings

**Tottenham Court Road, High Holborn, Gower Street and
Bloomsbury Street now all have two way traffic**

Key summary / information

- West End project started Monday 5th March 2018
- Sign up to our [monthly newsletter](#)
- [Latest work updated](#) weekly online
- [Scheme maps](#) available on our website
- Deliveries Guide [available online](#)
- Alfred Place programme [available online](#)

New for this month

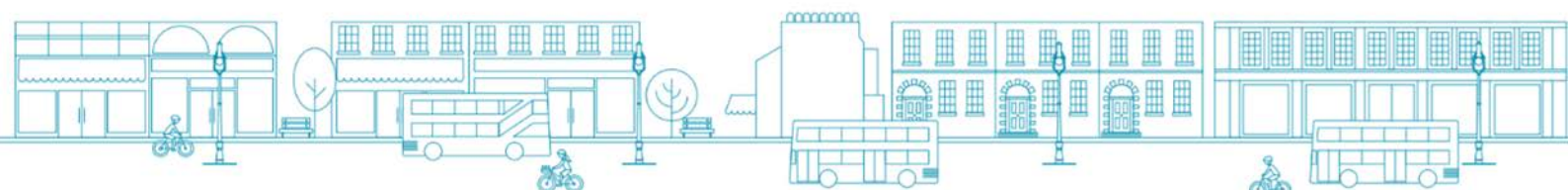
- Postponed resurfacing of Grafton Way to take place on the 20th and 21st November
- Alfred Place construction update
- Pocket parks construction update
- Tottenham Court Road's colourful crossing events

Project Update – 8th November 2021

The team is currently planning the final change to two way traffic for the northern section of Gower Street between Grafton Way and Euston Road. More information on this will be shared once the programme is completed. Work to Alfred Place continues with an update on the Pocket Parks programme included in this briefing. Work continues around the St Giles Square area as the team creates a new public space.

As a reminder Gower Street and Bloomsbury Street is now two way to traffic between Grafton Way and High Holborn. This means changes for pedestrians, drivers and cyclists.

The full traffic restrictions on Tottenham Court Road are now permanent. Areas of Tottenham Court Road are now restricted to buses and cyclists only on Mondays –



Saturdays 8am-7pm. For more information on any of these changes [visit our website](#).

Our website also [includes maps](#) on how you can drive around the area inside and outside of the restricted hours. The overview map was updated on the 19th May 2021.

Resurfacing of Grafton Way

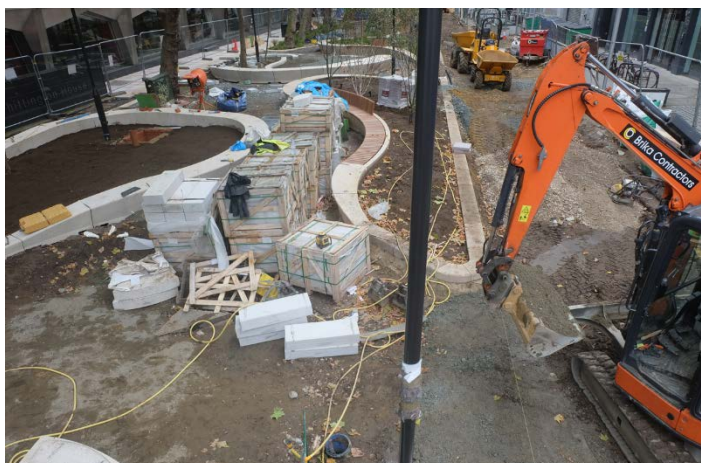
During November we will be resurfacing the eastern section of Grafton Way, between Beaumont Place and Gower Street. This work was rescheduled from the end of July 2021 due to staff shortages caused by Covid-19. We are working at weekends to minimise the impact on UCLH Hospital, the London Ambulance Service and the wider road network.

Completion of this work will require weekend working on Saturday 20th November and Sunday 21st November 2021. Signed diversion routes will be in place for these closures and in particular for UCLH drop off and access points. Working hours will be 8am – 6pm on Saturday and 10am - 6pm on Sunday, the only work outside of these times will be setting up and taking down of the diversion signs. For details on the programme visit our website for the latest schedule, diversion routes and access information.

Alfred Place update

Seating is currently being installed with trees and planting also being added. The space is really starting to take shape now. Work on the park itself is now expected to be completed by early 2022.

As part of the project we are accommodating work to lay ducts for future extra high voltage electricity cables which need to be installed in the area so have made changes to the programme. We are now bringing forward the work to the road on Alfred Place which will start on Thursday 30th September. Pedestrian access will be maintained but diversions will be in place.



You can see plans and programmes for both the pavement works and road works on our website. The road closures include:

- Alfred Place between Chenies Street and just south of the Law Courts will be closed from the 30th September – 9th November.
- Alfred Place between Store Street and just south of the Law Courts will be closed from the 10th November – 24th December.
- Chenies Street will be closed between Alfred Place and North Crescent from the 3rd January 2022 – 17th January 2022. Access to Alfred Place will be via Store Street only.

- Store Street will be closed between Alfred Place and South Crescent from the 22nd January – 2nd February 2022. Access to Alfred Place will be via Chenies Street only.

Pocket Park updates

Due to material delivery delays we have had to slightly delay the construction of the pocket parks on Tottenham Court Road.

Volkers working hours will be Mon - Fri: 8am – 6pm and Saturday: 8am – 1pm.

- Capper Street work will start as soon as the materials are received in early November and is expected to be completed by the end of November.
- Bedford Avenue work starts Monday 8th November 2021 and is expected to be completed within a week.



Tottenham Court Road's colourful crossings

Tottenham Court Road is now hosting 11 colourful pedestrian crossings as part of the Mayor of London's Let's Do London campaign.

Here in Camden we are hosting artwork by London based artist [Yinka Ilori](#) which is funded by Bloomberg Philanthropies with a contribution by Camden Council. A selection of pedestrian crossings along the road have been transformed during the London Design Festival into beautiful outdoor works of art for you to enjoy.

For the local community and visitors, Camden is also hosting a programme of events, so you can get involved and celebrate the artwork. These events include free walks where you can learn more about the artistic history of the area and see artwork from Yinka Ilori.

Choose from two free walks - or why not try both! Booking is essential.

1. [Creative, Cultural and Colourful:](#)

Learn about the history and artwork of Tottenham Court Road and the many communities that have shaped the vibrant heart of Camden's West End

2. [Follow the yellow brick road](#)

Learn about the history and characters that have shaped London in the last 2,000 years – not just kings and queens, but also cats, lions and unicorns! There's something for everyone along this route. Tottenham Court Road to the City of London.

Contact details

| | |
|-----------------------|---|
| Website | camden.gov.uk/westendproject |
| Electronic Newsletter | Sign up via our website |
| Phone | Alfred Place enquiries: 0800 917 6263 Other project enquiries: 0207 974 4444 |
| Email | westendproject@camden.gov.uk |