

Weekly Footfall Counts

	Year to date %		Year on year %		Week on week %	
	2023	2022	2023	2022	2023	2022
Fitzrovia BID	15.8%	82.7%	3.9%	14.1%	0.5%	-0.3%
Greater London	9.2%	59.2%	0.4%	13.7%	-2.7%	-2.6%
High Street Index (Westminster)	13.1%	91.0%	3.9%	17.0%	-1.2%	-1.7%
High Street Index - BDSU (BDSU - Multifunctional)	3.7%	41.6%	1.1%	2.9%	-1.5%	-3.8%
UK	4.6%	42.3%	-0.6%	4.3%	-2.3%	-3.5%

Benchmark calculations (Year on Year and Week on Week) have been calculated using like for like data sets (only those counters available in both comparison periods) to ensure statistical accuracy

Headlines

The total number of visitors to Fitzrovia BID for the last 52 weeks is 42,456,902 which is 16.4% up on the previous year.

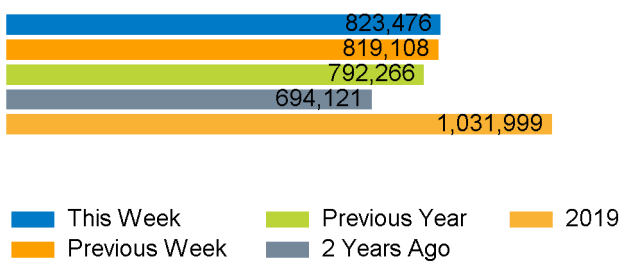
The total number of visitors for the year to date is 31,562,370 which is 15.8% up on the previous year.

The total number of visitors to Fitzrovia BID in week commencing 17 September 2023 was 823,476.

The busiest day in week commencing 17 September 2023 was Friday with 164,946 visitors.

The peak hour of the week was 17:00 on Friday 22 September 2023 with footfall of 14,100.

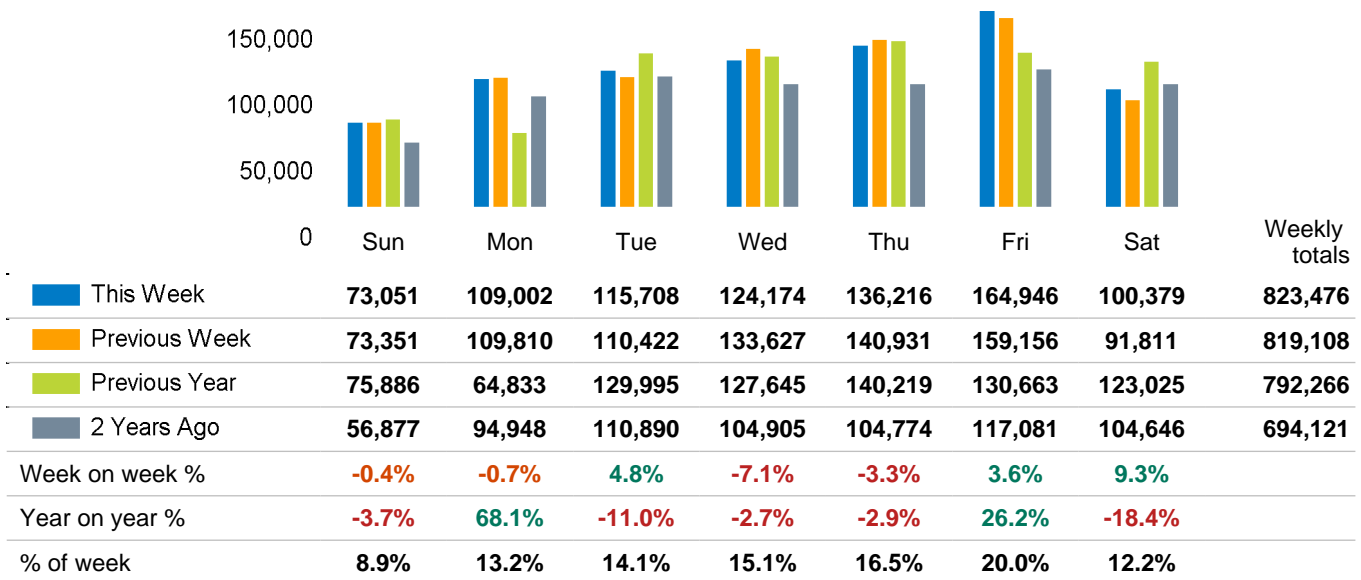
Footfall Counts by week



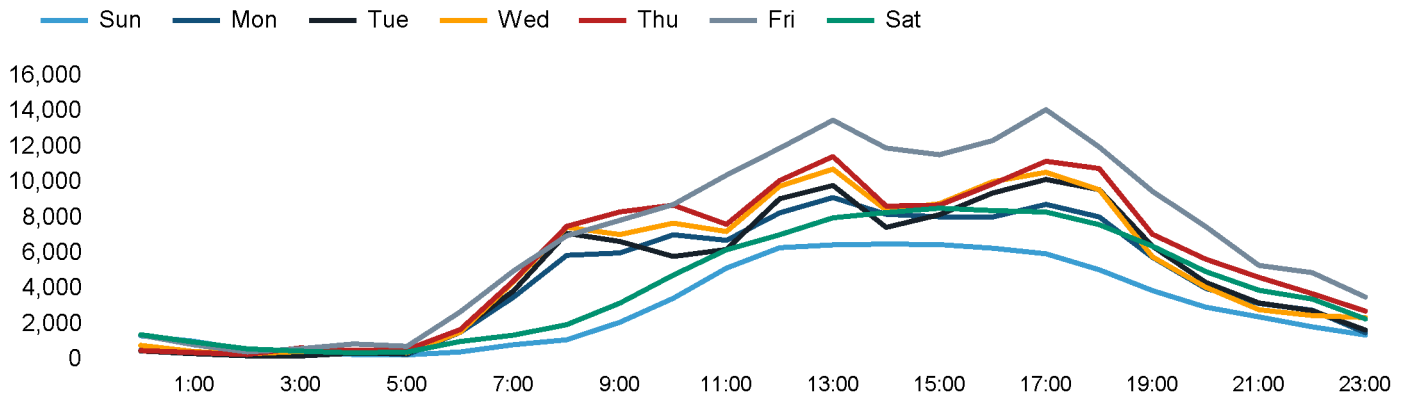
Weather

	Sun	Mon	Tue	Wed	Thu	Fri	Sat
This week	27°	20°	20°	21°	21°	18°	18°
Previous week	33°	31°	25°	23°	24°	26°	27°
Previous year	18°	18°	19°	21°	21°	18°	18°

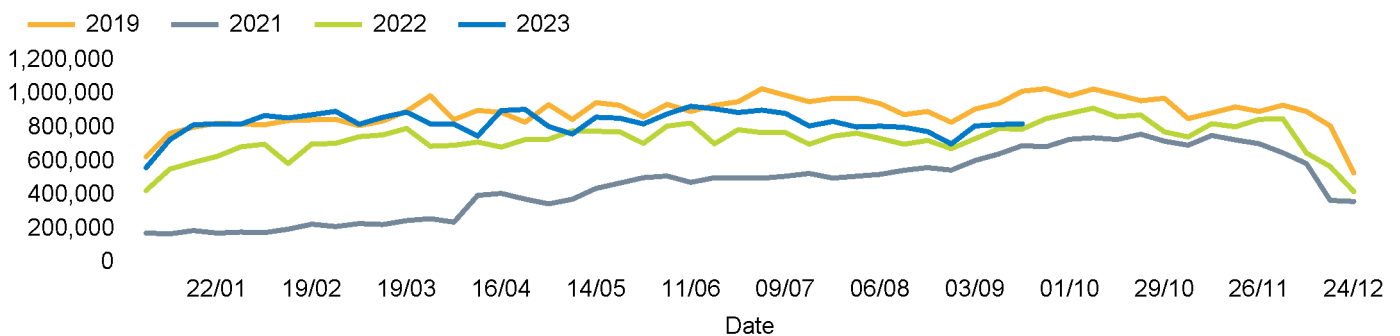
Footfall Counts by day



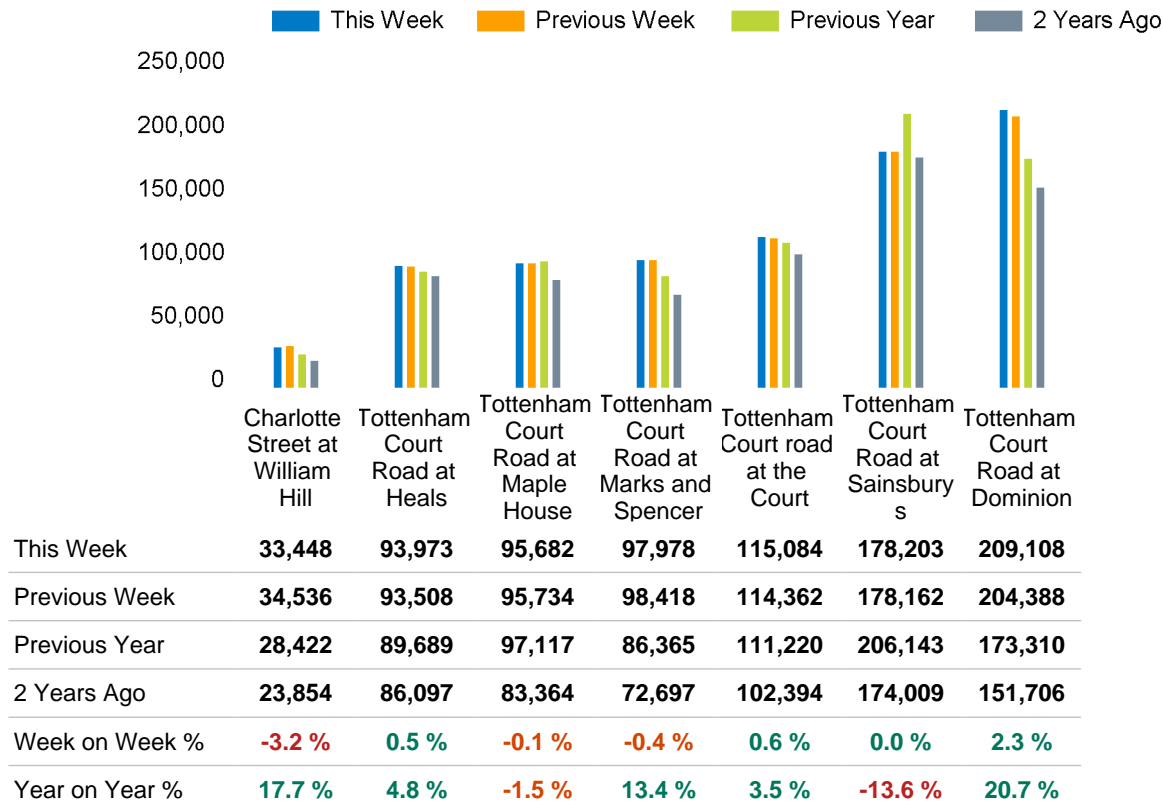
Footfall Counts by hour



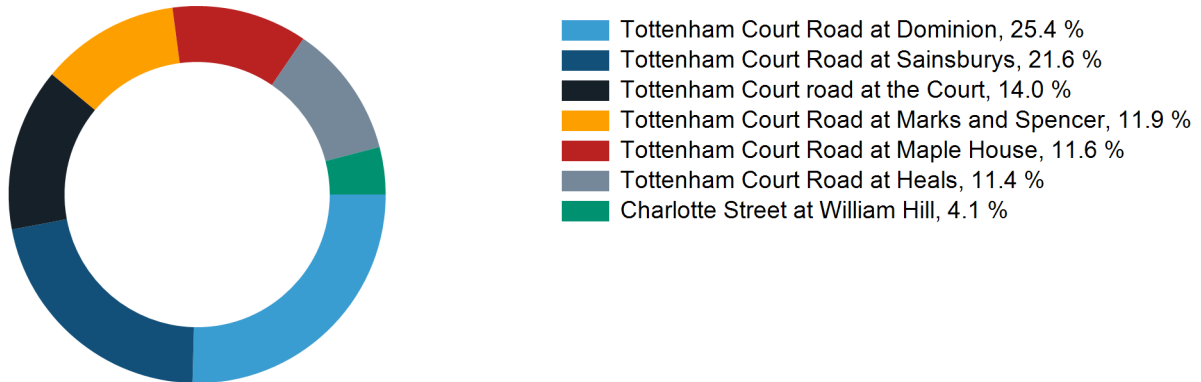
Footfall Counts by week



Footfall Counts by location



Footfall Counts by location



Reporting dates

This week - 17 September 2023 - 23 September 2023

Year to Date % Change is the annual % change in footfall from January of this year compared to the same period last year. Week 1, 2023 to Week 38, 2023 Vs Week 1, 2022 to Week 38, 2022

Year on Year % Change is the % change in footfall for this week compared to the same week in the previous year. Week 38, 2023 Vs Week 38, 2022

Week on Week % Change is the % change in footfall for this week from the previous week. Week 38 2023 Vs Week 37 2023

2019 comparison for Fitzrovia BID

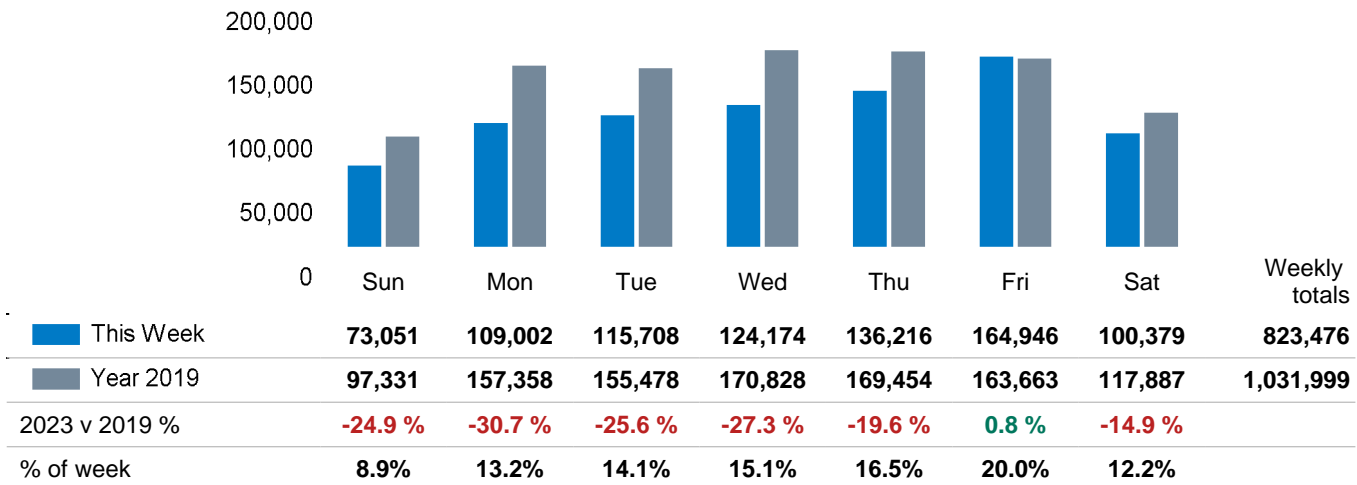
The impact of Covid-19 on footfall means that subsequent to the anniversary of Lockdown 1 (23rd March 2021), it is important to add a further annual comparison of 2022 versus 2019 in order to provide a comparison to the last normal trading year. This is provided in the section *below* and shows your current performance in 2022 against the similar time period in 2019

Headlines

	Year to date %	Year on year %
	2023 Vs 2019	2023 Vs 2019
Fitzrovia BID	-7.8 %	-20.2 %
Greater London	-14.8 %	-14.1 %
High Street Index (Westminster)	-17.9 %	-16.6 %
High Street Index - BDSU (BDSU - Multifunctional)	-15.0 %	-13.6 %
UK	-14.2 %	-13.8 %

Fitzrovia BID is compared to the high street index.

Footfall Counts by day



Footfall Counts by location

